

Vimentin (Mesenchymal Cell Marker) Antibody - With BSA and Azide
Mouse Monoclonal Antibody [Clone SPM576]
Catalog # AH10809**Specification****Vimentin (Mesenchymal Cell Marker) Antibody - With BSA and Azide - Product Information**

Application	WB, IHC-P, IF, FC
Primary Accession	P08670
Other Accession	7431 , 455493
Reactivity	Human, Pig, Chicken, Goat, Bovine, Dog, Cat
Host	Mouse
Clonality	Monoclonal
Isotype	Mouse / IgG1
Calculated MW	57-60kDa KDa

Vimentin (Mesenchymal Cell Marker) Antibody - With BSA and Azide - Additional Information**Gene ID** 7431**Other Names**
Vimentin, VIM**Application Note**

WB~~1:1000<br \>IHC-P~~N/A<br \>IF~~1:50~200<br \>FC~~1:10~50

Format

200ug/ml of Ab purified from Bioreactor Concentrate by Protein A/G. Prepared in 10mM PBS with 0.05% BSA & 0.05% azide. Also available WITHOUT BSA & azide at 1.0mg/ml.

Storage

Store at 2 to 8°C. Antibody is stable for 24 months.

Precautions

Vimentin (Mesenchymal Cell Marker) Antibody - With BSA and Azide is for research use only and not for use in diagnostic or therapeutic procedures.

Vimentin (Mesenchymal Cell Marker) Antibody - With BSA and Azide - Protein Information**Name** VIM ([HGNC:12692](#))**Function**

Vimentins are class-III intermediate filaments found in various non-epithelial cells, especially

mesenchymal cells. Vimentin is attached to the nucleus, endoplasmic reticulum, and mitochondria, either laterally or terminally. Plays a role in cell directional movement, orientation, cell sheet organization and Golgi complex polarization at the cell migration front (By similarity). Protects SCRIB from proteasomal degradation and facilitates its localization to intermediate filaments in a cell contact-mediated manner (By similarity).

Cellular Location

Cytoplasm. Cytoplasm, cytoskeleton. Nucleus matrix {ECO:0000250|UniProtKB:P31000}. Cell membrane {ECO:0000250|UniProtKB:P20152}

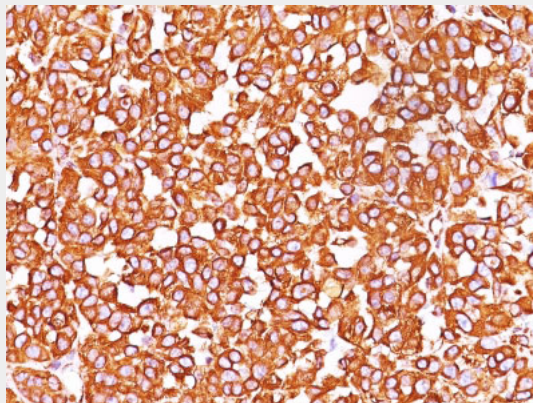
Tissue Location

Highly expressed in fibroblasts, some expression in T- and B-lymphocytes, and little or no expression in Burkitt's lymphoma cell lines. Expressed in many hormone-independent mammary carcinoma cell lines.

Vimentin (Mesenchymal Cell Marker) Antibody - With BSA and Azide - Protocols

Provided below are standard protocols that you may find useful for product applications.

- [Western Blot](#)
- [Blocking Peptides](#)
- [Dot Blot](#)
- [Immunohistochemistry](#)
- [Immunofluorescence](#)
- [Immunoprecipitation](#)
- [Flow Cytometry](#)
- [Cell Culture](#)

Vimentin (Mesenchymal Cell Marker) Antibody - With BSA and Azide - Images

Formalin-fixed, paraffin-embedded human Melanoma stained with Vimentin Monoclonal Antibody (SPM576).

Vimentin (Mesenchymal Cell Marker) Antibody - With BSA and Azide - Background

This MAb reacts with a 58kDa protein identified as vimentin. It shows no cross-reaction with other closely related intermediate filament proteins (IFP[™]s) such as desmin, keratin, neurofilament, and glial fibrillary acid protein. Anti-vimentin alone is of limited value as a diagnostic tool; however, when used in panels with other antibodies, it is useful for the sub-classification of a given tumor. Expression of vimentin, when used in conjunction with anti-keratin, is helpful when distinguishing melanomas from undifferentiated carcinomas and large cell lymphomas. All melanomas and

Schwannomas react strongly with anti-vimentin. It labels a variety of mesenchymal cells, including melanocytes, lymphocytes, endothelial cells, and fibroblasts. Non-reactivity of anti-vimentin is often considered more useful than its positive reactivity, since there are a few tumors that do not contain vimentin, e.g. hepatoma and seminoma. Anti-vimentin is also useful as a tissue process control reagent.

Vimentin (Mesenchymal Cell Marker) Antibody - With BSA and Azide - References

Osborn M et. al. European Journal of Cell Biology. 1984; 34:137-143